

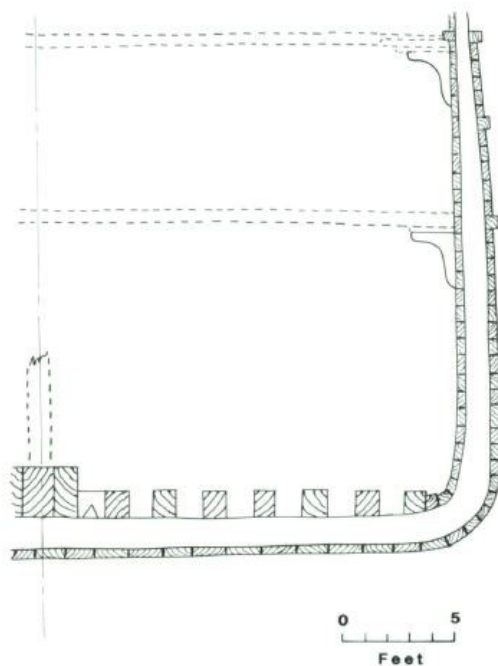
Henry Chisholm

Propeller Driven Bulk Freighter

[diving.htm](#)

Learn More About Diving at Isle Royale: <http://www.nps.gov/isro/planyourvisit/scuba-diving.htm>

HENRY CHISHOLM X-Section at Midships



Drawings: C.P. Labadie

Vessel History

Launched: August 28, 1880 in Cleveland, Ohio

Dimensions: 256.5 feet in length; 39.3 ft in beam; 20.3ft in depth

Livelihood: Vessel was a wooden bulk freighter with a single screw; it was powered by a fore-and-aft compound steam engine, producing 1,707 horsepower, fed by twin boilers. *Chisholm*, loaded, could reach 9 knots.

The vessel was built close to the end of the era of large wooden vessels as steel was becoming a larger competitor in the boat building business. The vessel was involved in multiple accidents, which was not unusual for bulk freighters in this era. The vessel ran aground on its maiden voyage and a man fell through an open hatch. Vessels were built to maximize space and limitations through canals; this sometimes made for difficult navigation. The vessel was primarily involved in coal, iron ore, and grain trades. The freighter was also involved in towing services for underpower boats.

Loss: October 20, 1898, *Chisholm* wrecks on Rock of Ages reef doing 9 knots; the vessel was trying to enter Washington Harbor after spending days searching for the missing *John Martin*. All survived.

Fate: The vessel quickly broke up and was soon after caught in a northwest gale. The vessel has not been salvaged.



GPS Coordinates: 47°51'28"N and 89°19'32"W

Depth: 20-80 feet; 140ft engine; 150ft disarticulated hull

Skill level: Beginner—Intermediate

Henry Chisholm

Archaeological Site Plan

